



The ReactorPanel Saddle Company
414 Lesser Street
Oakland, CA 94601

Phone: 510-698-6272
Fax: 510-698-6275
Toll Free (US only): 888-771-4402
e-mail: info@reactorpanel.com

The ReactorPanel Saddle Template Guide

Templates are used to size or customize the ReactorPanel tree so we can make sure that the saddle we send you will fit your horse. In addition, templates can be useful for tracking changes in your horse's shape. This step-by-step guide shows you how to make templates of your horse.

Before we ship you a saddle, we ask that you send us the following:

- 1) Tracings A and B (detailed below)
- 2) Photographs of your horse. At a minimum, we need two clear photos showing:

Top Line



To show the top line clearly, take this photo against contrasting background. Be sure the ground is level and the horse is square.



This shot shows the shoulder and back and must be taken carefully to avoid distortion. Warning: do not put yourself at risk!

Shape of Shoulders

Send us as many photos as you like, especially those that show the unique needs you and your horse have from a saddle. We appreciate photos of you riding, if possible.

MATERIALS YOU NEED BEFORE YOU BEGIN

- Flexi-Curve, available at shops that provide drafting supplies. A 24" curve is ideal.
- Masking Tape or Duct Tape to mark your horse temporarily
- Large paper, at least 18" square. Paper with graph lines is the most useful.
- Heavy-duty felt-tip pen. A Sharpie marker is perfect.
- A flat spot for your horse to stand

If possible, arrange to have an assistant help you keep your horse standing still and square.

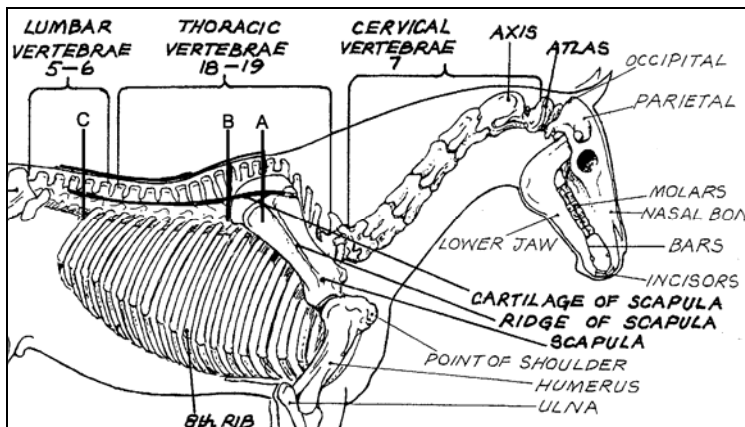
PREPARING TO TAKE YOUR TEMPLATES

You will find it takes only a few minutes to take and trace each template, but be sure to take time to redo your work until you are convinced your tracings are accurate. The size and angles of your saddle tree will be chosen based on your tracings.

- Prepare your paper by laying it out on a flat surface as close you your horse as possible. Label the paper with the date, your name, and your horse's name. (Every time you do a tracing, label it in this way.)
- Prepare your Flexi-Curve by folding it in half. Make a mark (with the felt-tip pen) at the exact center of the curve. We also recommend that you label one end "left" and the other end "right".
- If your curve is longer than 24", you will be likely to distort your tracings if you use the entire curve. Bend the ends of the curve up (making sure you have at least 20" of usable curve) before beginning to template your horse.
- Cut several small, thin pieces of tape and have them readily available

WHAT ARE WE MEASURING – AND WHY?

You will be taking two measurements before we send you a trial saddle. These measurements are A and B, detailed below, and they help us size the front of the tree. Because of ReactorPanel's adjustability, these two measurements are often all that is needed for a perfect fit. Based on your success with the trial saddle, if we determine that your horse requires a custom tree, more measurements or photos may be necessary.

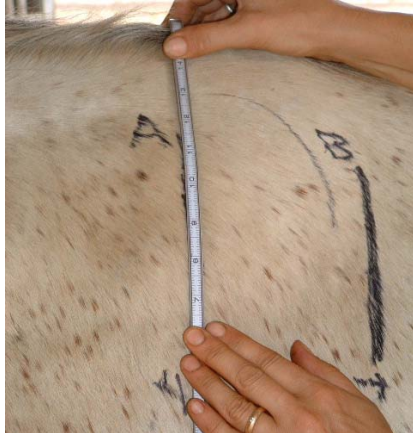


In the figure to the left, you can see the locations of your tracings relative to the horse's skeletal structure. The "A" Tracing is directly over the scapula, and "B" is just behind (approximately 1") the shoulder.

IMPORTANT NOTE: Accuracy is critical! Be sure you have located the proper locations for your tracings, and practice taking your horse's shape and removing the curve without distorting the contours before you trace the images onto paper.

INSTRUCTIONS FOR TAKING TEMPLATE “A”

This measurement is taken directly over the center of the scapula. On many horses, this will appear to be the “bulgiest” part of the scapula; on others, it may be very difficult to find. If you have difficulty finding the center of the scapula, you may find it easier to come forward approximately four inches from the back edge of the scapula.



This photo shows a template being made of Tracing A. This rider has marked her horse with felt marker, showing the curve of the scapula and the location for Tracing B. You can accomplish the same thing by using small strips of tape to mark your template sites on both sides (right and left) of your horse.

FOR PERFECT TEMPLATES, FOLLOW THESE STEPS:

1. Find position “A” and mark the area with tape on each side of your horse.
2. Drape the Flexi-Curve over the wither. The center of the Flexi-Curve (where you have made a mark) should be over the center of the wither. Be sure to use the side marked “left” against the left side of your horse.
3. Press the curve gently against the horse with one hand as you hold the curve against the wither with the other hand. NOTE: Do not press down on the curve, but use an “up and in” motion to form the curve to the horse.
4. Make sure that you have accurately followed your horse’s contours. Check for gaps between the horse and the curve, and also be sure the curve is not pressed too firmly into muscle or tissue. BE SURE TO CHECK BOTH SIDES.
5. With both hands, lift the ends of the curve gently from the horse and immediately flip the curve so that it lays flat against the insides of your upturned palms. The idea is to preserve the exact curve; do not allow the curve to bend or change shape. If it does, redo the measurement.
6. Carry the curve over to the graph paper and lay it flat. Be sure to keep the left side on the left and the right side on the right as you lay it down. (This may be harder than it sounds.)
7. Hold the curve against the page to keep it still. Using the felt-tip pen, trace the inside of the curve—the edge that sat against your horse—onto the page, and label it “A.”
8. Take the template at least one more time to be sure that your image is accurate.

IMPORTANT: *You must trace at least 10” down each leg (or 20” total) to enable us to size the tree.*

INSTRUCTIONS FOR TAKING TEMPLATE “B”

Measurement “B” is taken approximately 1” (two fingers for many people) behind the back edge of the scapula. This is where the front edge of your saddle should be placed. This measurement will be used to assess the angles of the saddle tree, and so is critically important.



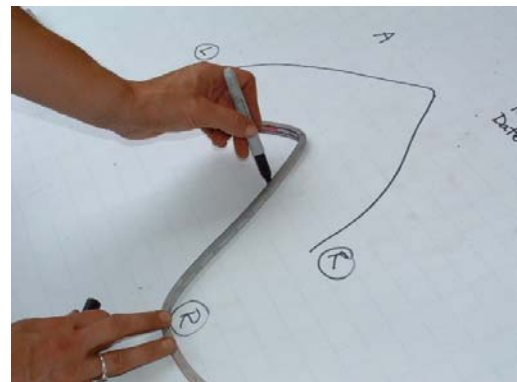
Be sure to hold the center of the curve against the wither with one hand, while carefully forming the curve against the horse with the other.

1. Find position “B” on your horse and mark both left and right sides with tape
2. Form the curve to the horse exactly as you did for the “A” tracing, making sure to use the side of the curve marked “left” on the left side of the horse.
3. Check for gaps or excess tightness between the curve and the horse.
4. Carefully lift the curve and trace against the inside edge onto your paper.
5. Take the measurement several times, until you are sure you have an accurate template, then label this image “B”

Be sure to trace at least 10 inches down on each leg of the template!

The template shown (right) is in process.
Your finished template will have:

- Two tracings, marked “A” and “B”
- Notations indicating “left” and “right”
- Your name
- Your horse’s name
- Today’s date



FINAL CHECK

- 1) Are your templates clear, and do they reflect the true contours of your horse?
- 2) Are your templates and photos labeled with date, your name, and your horse’s name?

If so, you’re finished! Mail us the photos, templates and your completed Evaluation Agreement, and a saddle will soon be on its way to you for a two-week test.

The ReactorPanel Saddle Co. □ 414 Lesser St. □ Oakland, CA 94601 □ Phone 1-888-771-4402